

## How to access Pléiades Glacier Observatory (PGO) digital surface models (DSM) from the A2S website

### 1. Catalogue access

Note that open access is restricted to DSM. users will need to sign a specific licence to access the ortho-images (contact point Etienne Berthier, [etienne.berthier@univ-tlse3.fr](mailto:etienne.berthier@univ-tlse3.fr)). Read first [this document](#).

#### 1.1 If you don't have a Theia/Form@ter account yet

1. Go to the repository homepage (<https://a2s-dissemination.u-strasbg.fr>), then
2. Click on "Register" (on TerraDue) and create a new account, preferably using an institutional email address.
3. Go to your mailbox for validation
4. This is when you have to wait delay (up to 7 days!) for your account to be active
5. Then Sign in using your Terradue account credentials
6. If everything worked, you should be able to see the PGO collection (see Figure 1).
7. Do not hesitate to try on a different web browser if you do not see the DSM collection.

#### 1.2 If you already have an account

Users who already have an account can access to the catalogue (Figure 1) directly after **Sign in** on the repository home page (<https://a2s-dissemination.u-strasbg.fr>).

DATA TERRA ForM@Ter Theia

etienneberthiercnrs

Products catalog

Filter Apps  Q

1 total result(s) found



**Pléiades Glacier Observatory - Digital Surface Models**  
by Data-Terra/THEIA - ForM@Ter

This collection contains 2-m and 20-m Digital Surface Models (DSM) calculated from Pléiades stereo-pairs over 140 glacier sites. Data are provided by LEGOS with support from the French Space Agency (CNES). More information at: <https://doi.org/10.25577/313a-a978>

Nov 20th 2023

Access

Figure 1 – Page showing available products

## 2 Data selection

Once the catalogue **MNS-PGO** has been selected, a world map opens. To view all PGO DSM, change the count parameter in the search window to 500 (Figure 2). For that, click on **Advanced search form** (magnifying glass at top left) and then **Show other parameters**. Also, to display the selection/navigation tools, move the cursor over the red zone to the upper left corner of the map (Figure 3).

Tip: Do not hesitate to change the background layer, for visibility or to display glaciers (OSM)

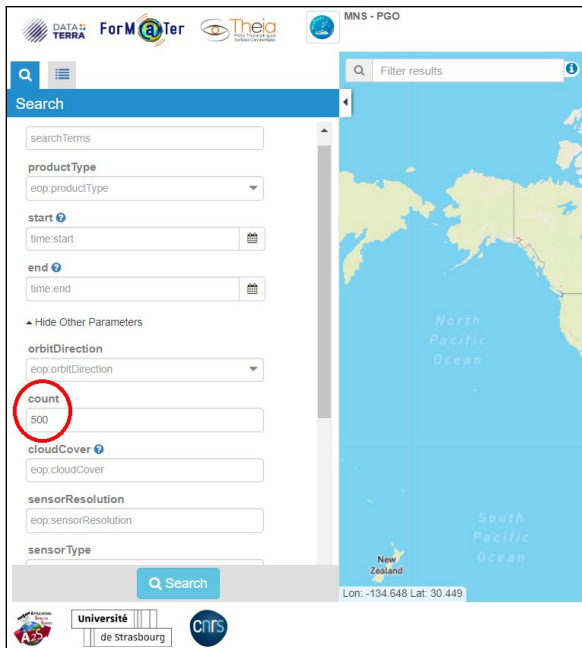


Figure 2 - Edit count parameter

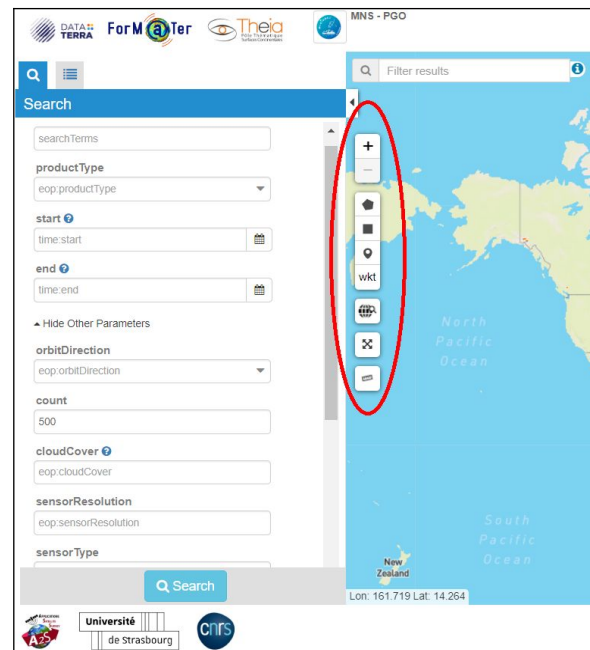


Figure 3 - Display map selection tools

One can draw a geographic area corresponding to the search. And also, to refine the search by glacier name or acquisition period.

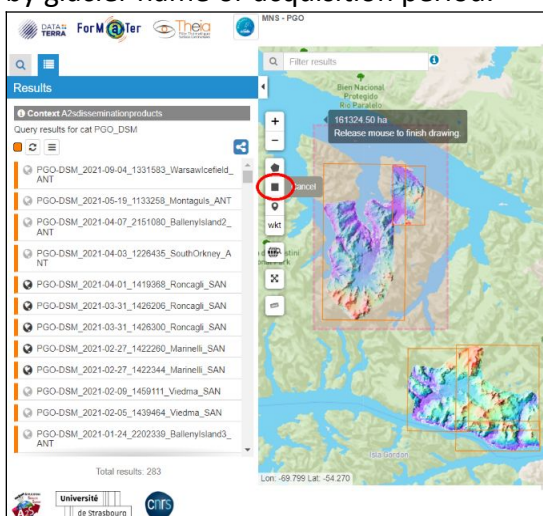


Figure 4 - Before geographical selection

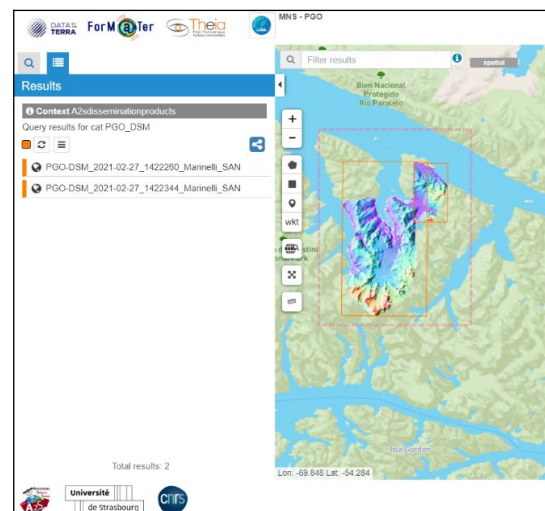


Figure 5 - After geographical selection

To unset the geographical selection, move your mouse on the “spatial” button to the right of the “Filter results” search box (Figure 6)



Figure 6 – unset the spatial filter

### 3 Data download

Once the desired data item is located, click either on its preview and then **Show details**, or click on **Show details** in the list of available DEMs (Figure 7). After selecting the DEM, click on the **Download** button at the bottom left of the page (Figure 8). A compressed file (.tar.gz) will start downloading with the elevation data and related files of information, data structure and readme files.

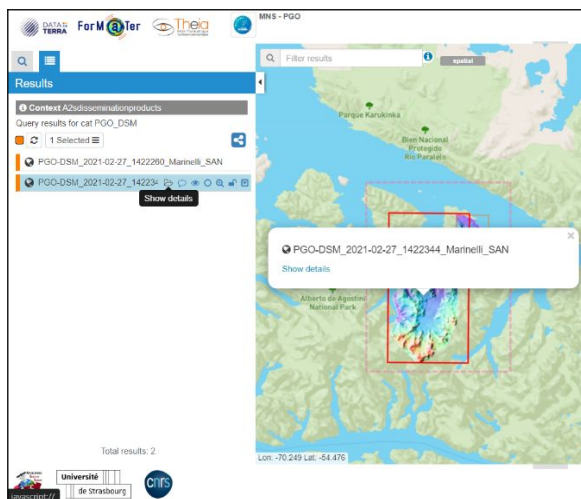


Figure 7 - Show DEM details

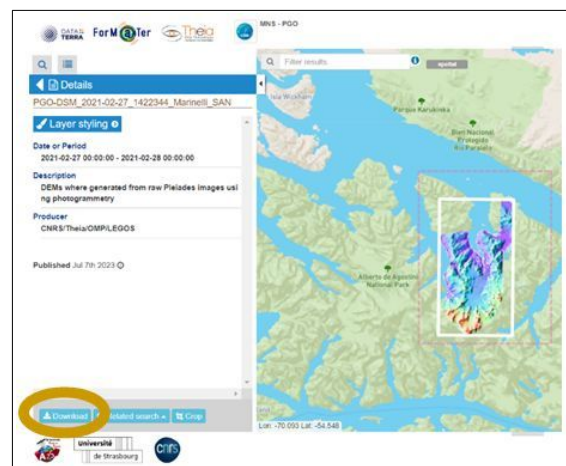


Figure 8 - Download data